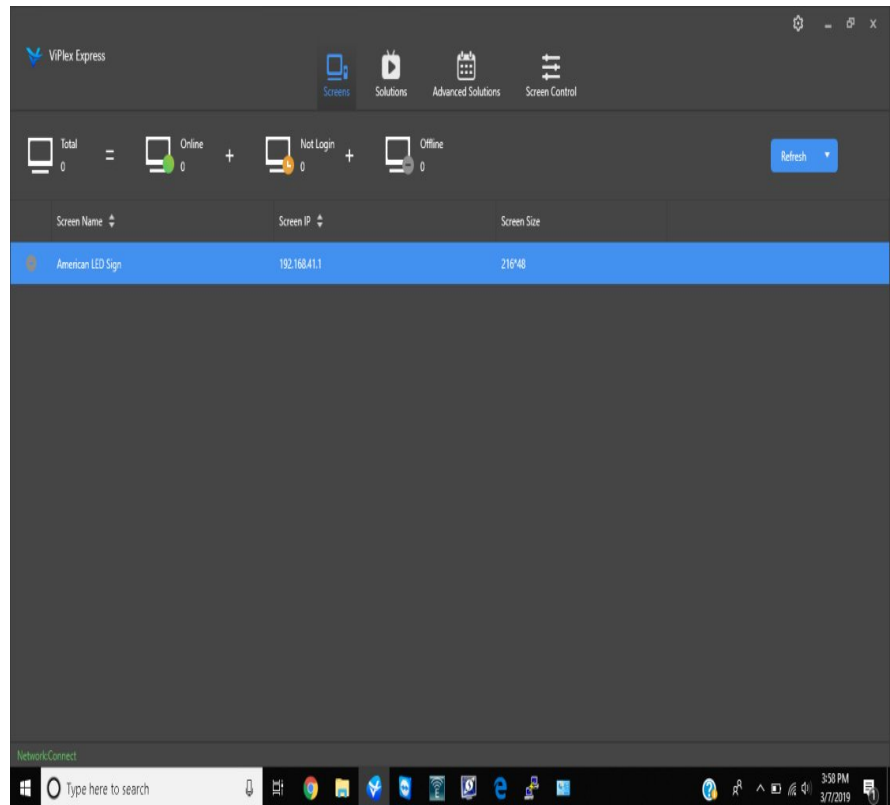


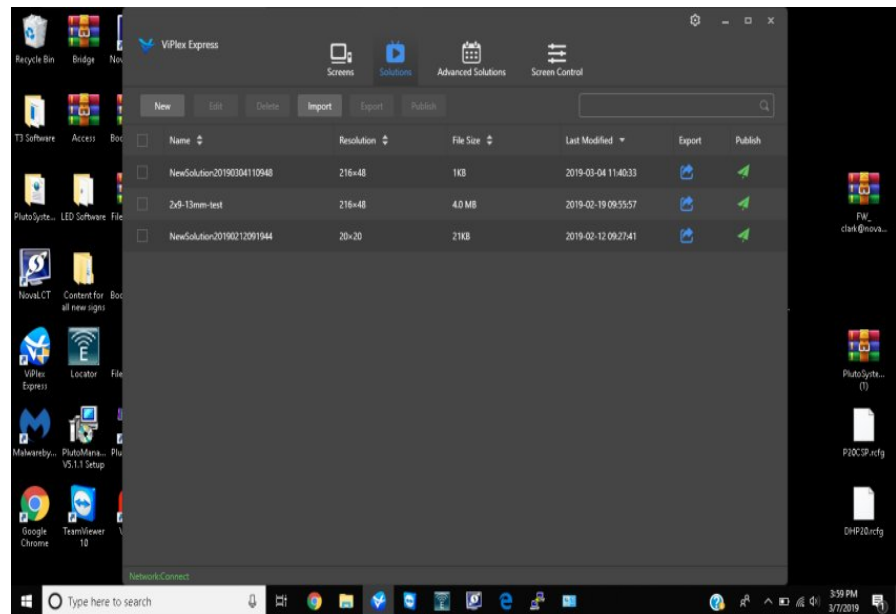


Publishing Content Using ViPlex Express

1. Open ViPlex Express
2. Connect to the sign (this can be done either by having the antennas connected to your network or by connecting directly to the T3's Taurus wifi signal.) A successful connection is indicated by a green dot next to the sign's name.



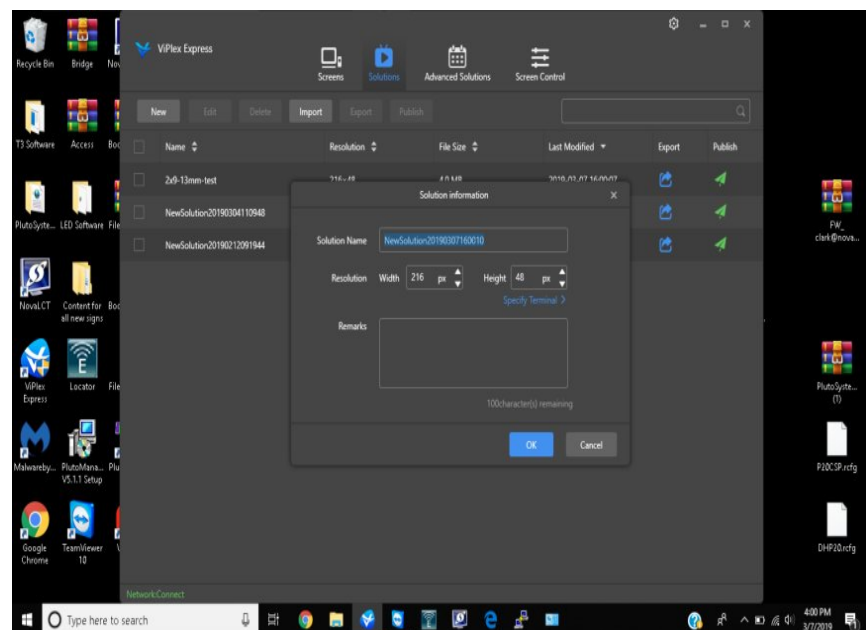
3. Go to Solutions



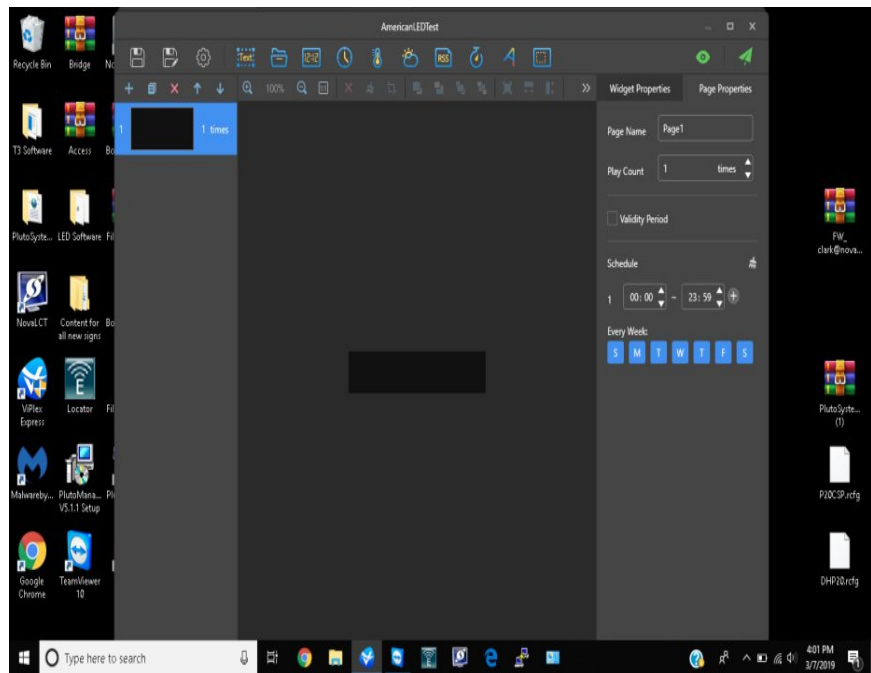
4. Solutions will have all previously saved content playlists available for publishing. You can also create new playlists here.

5. To create a new playlist, select new.

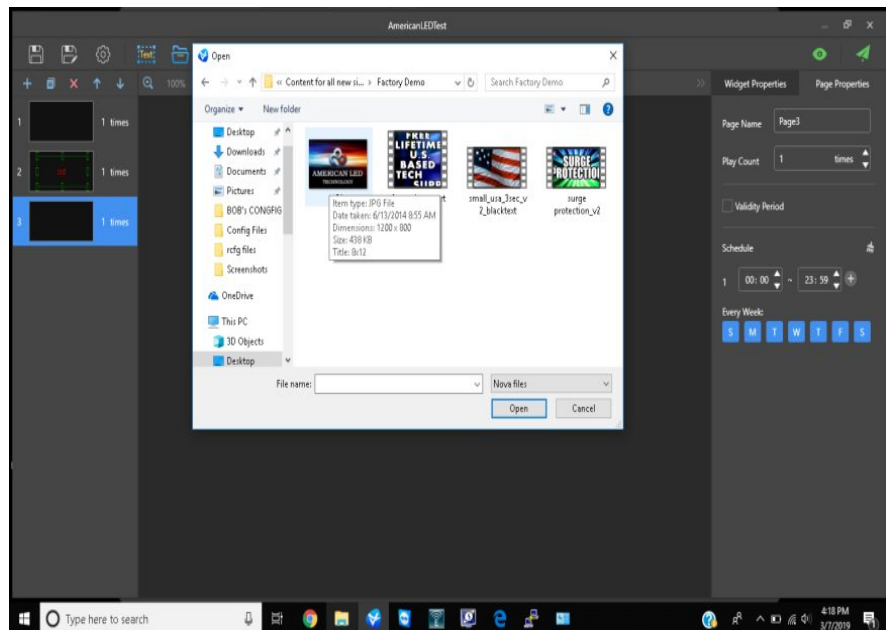
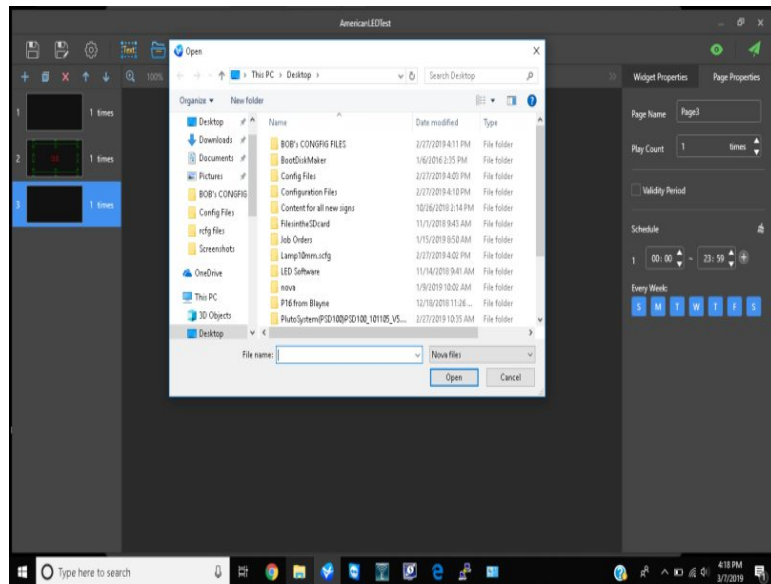
6. You will be prompted to name the playlist and set the resolution.

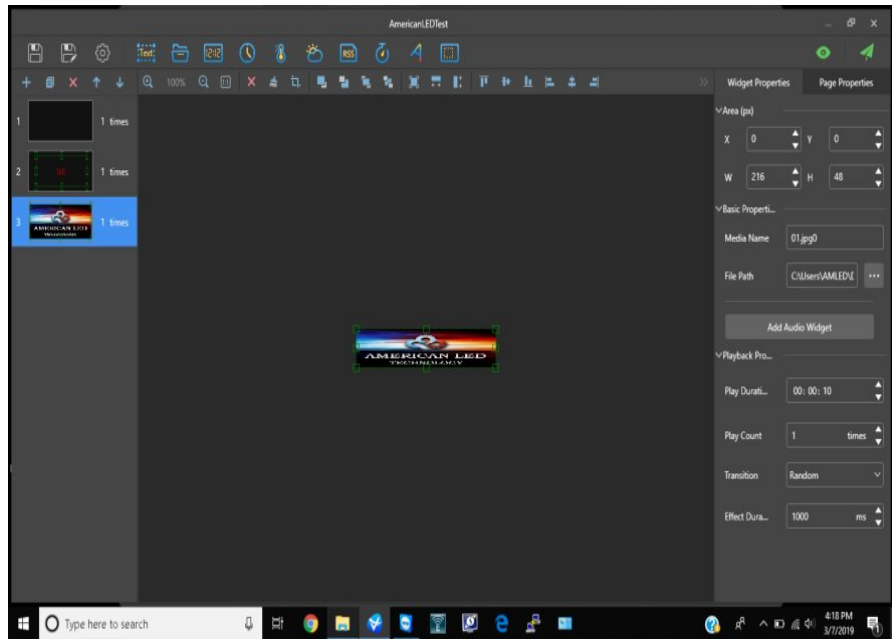


7. Click ok when the name and resolution are satisfactory.
8. The new playlist will start you off with one blank slide.



9. You can add more slides by selecting the plus sign on the left towards the top of the window.
10. The widgets at the top of the screen give you options of what kind of slide you can create with either text, your own content, add a clock, weather, and a timer.
11. To add images and videos saved on your computer, click the folder icon at the top of the page. This will open up the computer's file explorer, where you can navigate your folders to select the desired content.

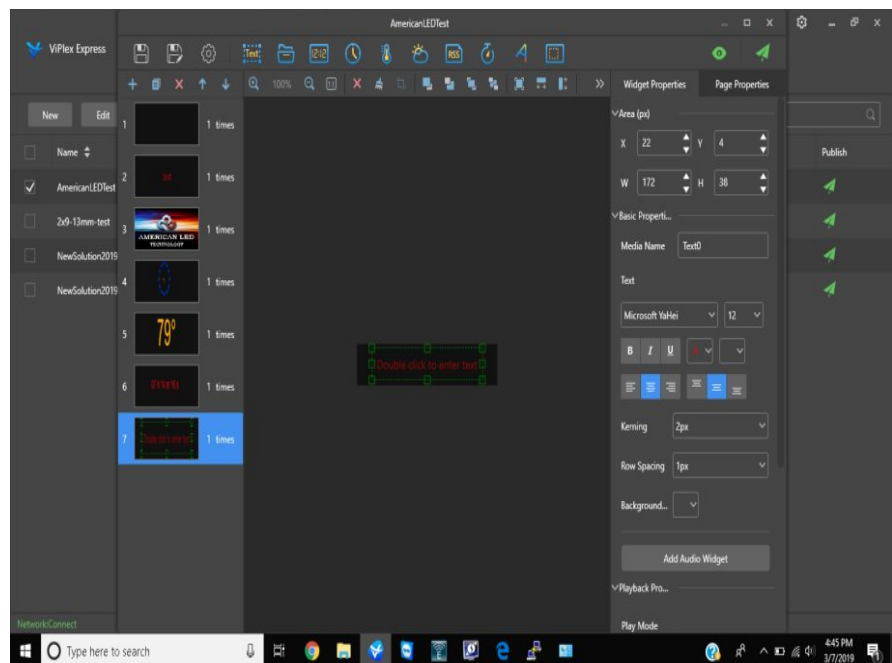




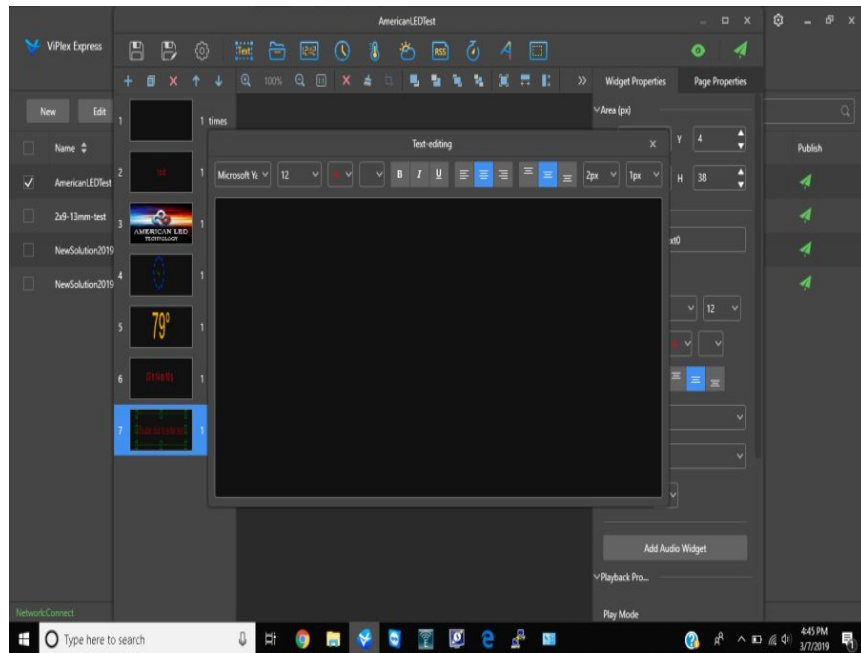
12. Adding text can be a quick and easy way to publish information to your sign that doesn't require creating images or videos.

13. To create a text slide, open a new slide and select Text.

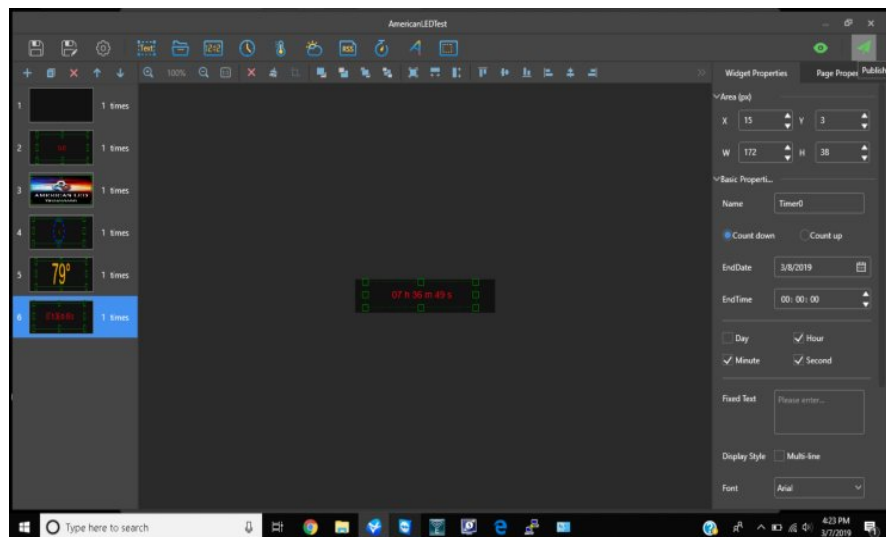
14. Double click the slide where it says "Double click to enter text"



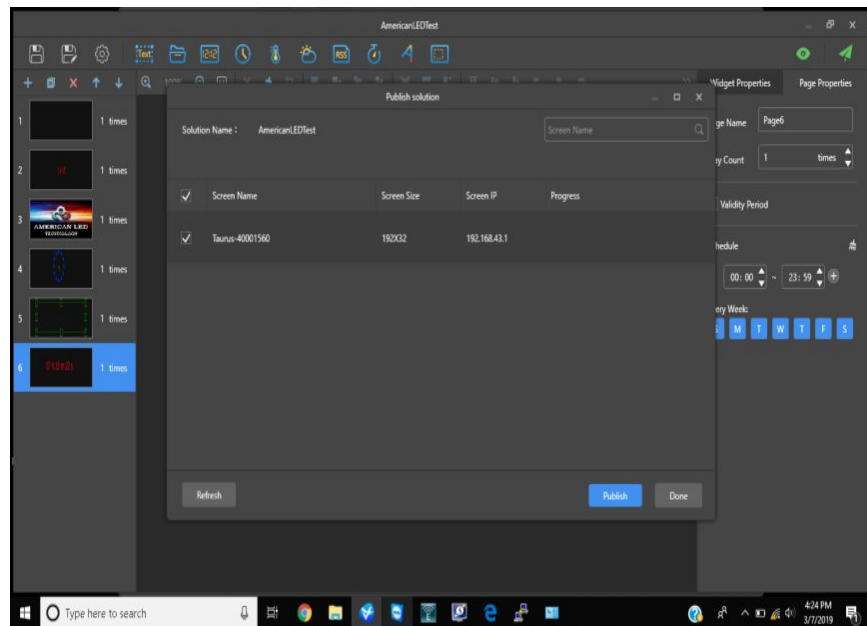
15. This will open up the text field where you can type the desired message and stylize the color, font, and alignment of the text.



16. Once you have the content created and in the desired play order, you can publish it to the sign by clicking the green paper airplane located on the top right of the screen just below the x to close the page.



17. Select the sign you want to publish to.



18. Once you have the desired sign checked, click Publish.

19. This will begin the publishing process and should take between a few seconds to up to a minute depending on how many slides are being published.

All American LED Signs include free, lifetime technical support. Dont hesitate to give us a call

AMERICAN LED TECHNOLOGY

3919 CRUTCHER ST, NORTH LITTLE ROCK, AR 72118
239-234-6490--- TECH@AMERICANLEDTECHNOLOGY.COM